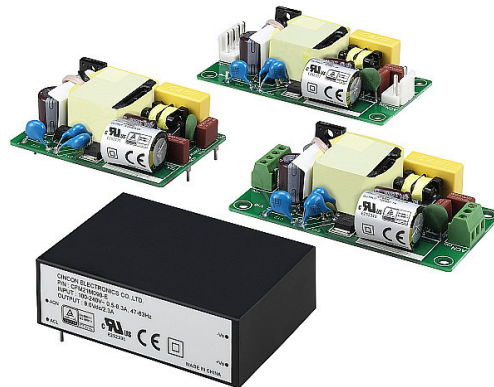


Datasheet



CFM21M Series

20 Watt Single Output Medical AC/DC Module



The information contained in this document has been carefully researched and is, to the best of our knowledge, accurate. However, we assume no liability for any product failures or damages, immediate or consequential, resulting from the use of the information provided herein. Our products are not intended for use in systems in which failures of product could result in personal injury. All trademarks mentioned herein are property of their respective owners. All specifications are subject to change without notice.



CFM21M SERIES

20 WATT SINGLE OUTPUT AC-DC MODULES

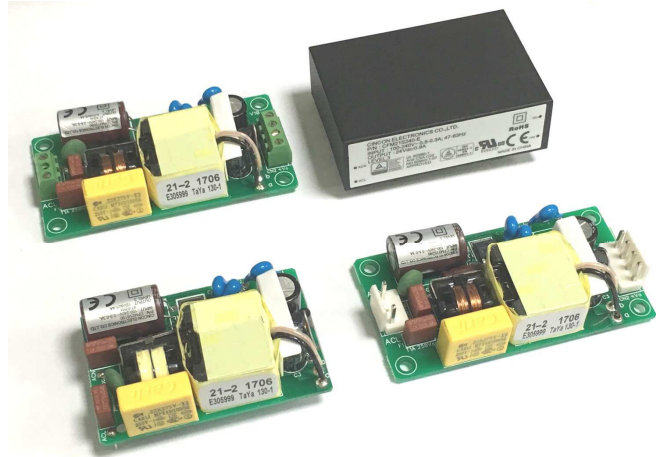


IEC
60601-1
EN
60601-1



Features

- * Universal Input Range 90~264VAC
- * Class II
- * Miniature Size Low Profile 0.8"
- * Industry-Standard Pin Out
- * Efficiency to 85%
- * Option for On-Board, Connector, Screw Terminal or Encapsulated type
- * Continuous Short Circuit Protection
- * Over Voltage Protection
- * No Load Input Power < 0.1W
- * Leakage Current < 100uA
- * UL60601-1/IEC60601-1/EN60601-1 Ed.3.1 Medical Safety Approved
- * 2 MOPP
- * Peak Load 130% (note 8)
- * Meet UL62368/IEC62368/EN62368



MODEL	OUTPUT VOLTAGE	OUTPUT CURRENT	RIPPLE & NOISE NOTE 1	VOLTAGE ACCURACY NOTE2	LINE REGULATION NOTE3	LOAD REGULATION NOTE4	OUTPUT RATED POWER	% EFF.
CFM21M050	5.0 V	4.0 A	50 mV	±1%	±0.5%	±1.0%	20.0 W	81%
CFM21M090	9.0 V	2.3 A	90 mV	±1%	±0.5%	±1.0%	20.7 W	83%
CFM21M120	12 V	1.7 A	100 mV	±1%	±0.5%	±1.0%	20.4 W	85%
CFM21M150	15 V	1.4 A	100 mV	±1%	±0.5%	±1.0%	21.0 W	85%
CFM21M240	24 V	0.9 A	100 mV	±1%	±0.5%	±1.0%	21.6 W	86%

Specifications

INPUT SPECIFICATIONS:

Voltage 90~264Vac
 Frequency 47 to 63Hz
 Input Current 0.3 to 0.5A
 Inrush Current Cold Start@25°C 40A max. @230Vac
 Leakage Current 70uA Typical - 100uA max.

OUTPUT SPECIFICATIONS:

Isolation Input to output = 4000VAC
 Hold-up Time 10ms typ. @115Vac
 Short Circuit Protection Continuous
 Over Voltage Protection(TVS) 110%-140% of Nominal Output Voltage

GENERAL SPECIFICATIONS:

Efficiency see Table
 Switching Frequency 65KHz typ.
 Operating Temperature -25 ~ 70°C (with de-rating)
 Storage Temperature -40~85°C
 Cooling Natural Convection
 Humidity 93% RH max. Non condensing
 Operating Altitude..... 5000m
 MTBF MIL-HDBK-217F, GB 500Khrs min.
 Dimensions 2.38x1.60x0.80inches (60.5x40.6x20.4mm)
 -T: 3.00x1.60x0.77inches (76.2x40.6x19.5mm)
 -E: 2.53x1.74x0.80inches (64.2x44.2x20.4mm)
 -S: 3.00x1.60x0.77inches (76.2x40.6x19.5mm)
 Weight 55g, 60g(-T, -S), 110g(-E)

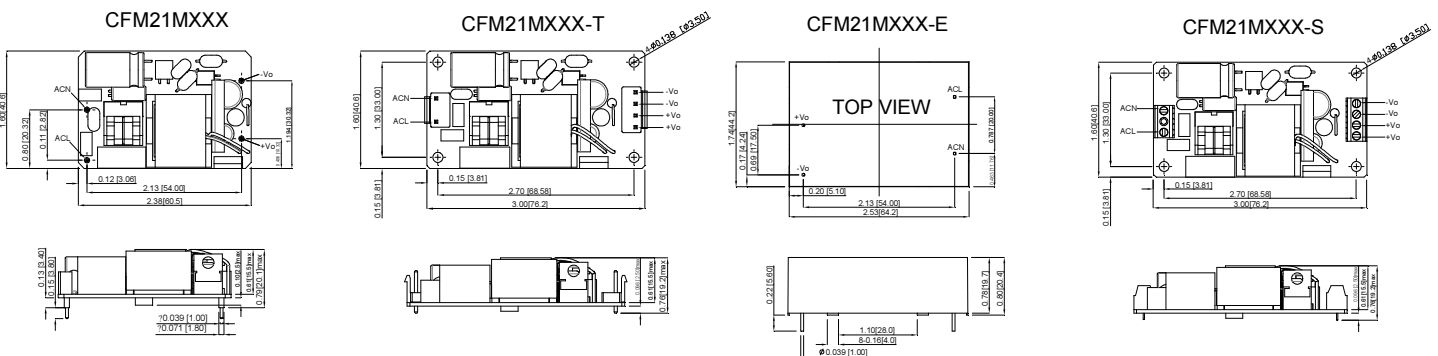
SAFETY AND EMISSION:

Emissions and Immunity (Ed. 4.0) EN55011 Class B, EN61000-3-2(3)
 EN60601-1-2 2015, IEC 61000-4-2(3/4/5/6/8/11)
 Safety Approved (Ed.3.1) IEC60601-1
 ANSI/AAMI ES 60601-1:2005/A1:2012&C1:2009/(R)2012&2010/(R)2012
 CAN/CSA-C22.2 NO. 60601-1:14, EN 60601-1: 2006+A11:2011+A1:2013,
 IEC 60601-1:2005+A1:2012

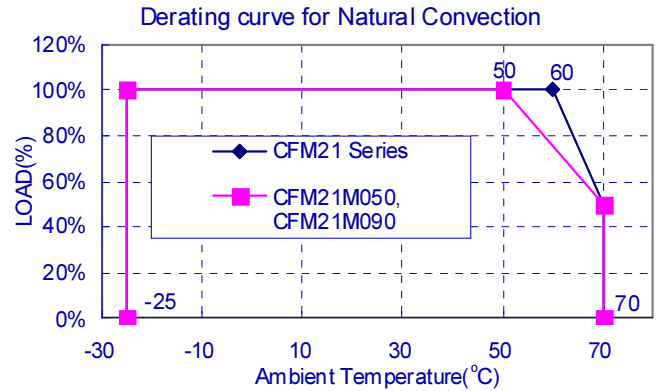
Mechanical Specification

Annotations: For all models, height does not exceed 34mm max.

All Dimensions In Inches[mm]
 Tolerance: Inches:x.xx= ±0.02,x.xxx= ±0.01
 Millimeters:x.x= ±0.5,x.xx= ±0.25



CFM21M Series De-rating Curve



NOTE:

1. Add a 0.1uF ceramic capacitor and a 10uF E.L. capacitor to output for Ripple & Noise measuring @20MHz BW.
2. Voltage accuracy is set of 100% rated load.
3. Line regulation is measured from high line to low line with full load.
4. Load regulation is measured from 10% to 100% full load.
5. T Version Connection: JST B3P-VH / B4P-VH or equivalent.
6. S Version Connection: DECA MB332-381A or equivalent.
7. Typical efficiency at 230VAC and 100% load at 25°C.
8. Peak load 130% lasting < 10 seconds with a maximum duty cycle of 10% at nominal Line.

Typical at 25°C, nominal line and 75% load, unless otherwise Specified

FORTEC

ELEKTRONIK AG

Our company network supports you worldwide with offices in Germany, Austria, Switzerland, Great Britain and the USA. For more information please contact:



FORTEC Elektronik AG

Hauptniederlassung
Lechwiesenstr. 9
86899 Landsberg am Lech

Telefon: +49 (0) 8191 91172-0
Telefax: +49 (0) 8191 21770
E-Mail: sales@fortecag.de
Internet: www.fortecag.de

FORTEC Elektronik AG

Büro Nord
Am Hasenkamp 36
22457 Hamburg

Telefon: +49 (0) 40 54 80 56 11
Telefax: +49 (0) 40 54 80 56 13
E-Mail: nord@fortecag.de
Internet: www.fortecag.de

FORTEC Elektronik AG

Büro West
Hohenstaufenring 55
50674 Köln

Telefon: +49 (0) 221 272 273-0
Telefax: +49 (0) 221 272 273-10
E-Mail: west@fortecag.de
Internet: www.fortecag.de



FORTEC Elektronik AG

Büro Wien
Nuschinggasse 12
A-1230 Wien

Telefon: +43 1 8673492-0
Telefax: +43 1 8673492-26
E-Mail: office@fortec.at
Internet: www.fortec.at

ALTRAC AG

(Tochter der Fortec AG):
Bahnhofstraße 3
CH-5436 Würenlos

Telefon: +41 (0) 44 7446111
Telefax: +41 (0) 44 7446161
E-Mail: info@altrac.ch
Internet: www.altrac.ch



Members of the FORTEC Group:

ALTRAC

Autronic

EMTRON

DISTEC
A FORTEC GROUP MEMBER

DISPLAY TECHNOLOGY
A FORTEC GROUP MEMBER

APOLLO DISPLAY TECHNOLOGIES
A FORTEC GROUP MEMBER