

Datasheet

mITX-SKL-S-H110

Kontron

Our company network supports you worldwide with offices in Germany, Austria, Switzerland, Great Britain and the USA. For more information please contact:

FORTEC Elektronik AG

Hauptniederlassung
Lechwiesenstr. 9
86899 Landsberg am Lech

Telefon: +49 (0) 8191 91172-0
Telefax: +49 (0) 8191 21770
E-Mail: sales@fortecag.de
Internet: www.fortecag.de

FORTEC Elektronik AG

Büro West
Hohenstaufenring 55
50674 Köln

Telefon: +49 (0) 221 272 273-0
Telefax: +49 (0) 221 272 273-10
E-Mail: west@fortecag.de
Internet: www.fortecag.de

FORTEC Elektronik AG

Büro Wien
Nuschinggasse 12
A-1230 Wien

Telefon: +43 1 8673492-0
Telefax: +43 1 8673492-26
E-Mail: office@fortec.at
Internet: www.fortec.at

ALTRAC AG

(Tochter der FORTEC):
Bahnhofstraße 3
CH-5436 Würenlos

Telefon: +41 (0) 44 7446111
Telefax: +41 (0) 44 7446161
E-Mail: info@altrac.ch
Internet: www.altrac.ch

The information contained in this document has been carefully researched and is, to the best of our knowledge, accurate. However, we assume no liability for any product failures or damages, immediate or consequential, resulting from the use of the information provided herein. Our products are not intended for use in systems in which failures of product could result in personal injury. All trademarks mentioned herein are property of their respective owners. All specifications are subject to change without notice.

mITX-SKL-S- H110



EMBEDDED mITX DESKTOP MOTHERBOARD WITH 6th GENERATION Intel® 14NM QUAD CORE i3/i5/i7 CPUs

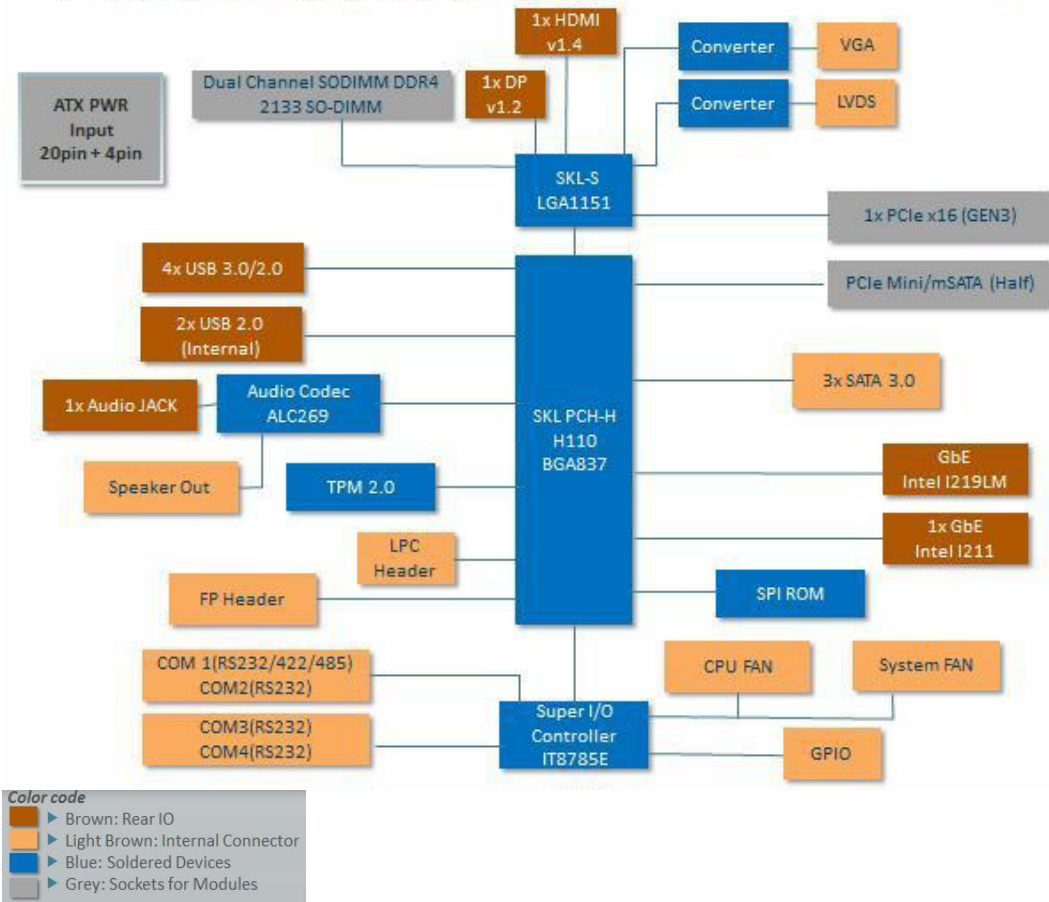
- Long term available Embedded mITX Desktop Class Motherboard
- High performance CPU, graphics, and media performance supporting up to maximum 3 independent displays (VGA/DP/HDMI/LVDS)
- mPCIe (half size) and TPM
- Two SO-DIMM Sockets DDR4-2133 Memory (up to 32GB)
- 2 of 10/100/1000MBit RJ45 Ethernet LAN

miTX-SKL-S-H110

Typical Applications

- ▶ POS/POI: Higher Graphics and CPU core performance, Low power, multi display support
- ▶ Medical/Connectivity: Higher Graphics and CPU core performance, longevity
- ▶ Industrial Automation: Wide range of I/Os, compact size, longevity
- ▶ Digital signage: Multi display support, low power, wide range of I/Os
- ▶ Future-oriented Devices: Display Port and LVDS, low power, compact size

BLOCK DIAGRAM MITX-SKL-S-H110



► TECHNICAL INFORMATION

mitX-SKL-S	H110 Feature
Processor	Intel Core i7/i5/i3
MEMORY	2x DDR4 Non ECC SODIMM 2133MHz (up to 32GB)
GRAPHICS INTERFACE	2x Independent Displays (1x DP, 1x LVDS/VGA)
SPECIAL	TPM2.0, HDMI
SATA PORTS	3x SATA Gen 3.0
MPCIE / MSATA SLOT	1x Mini-PCle (Half size) with USB2.0
SERIAL PORTS	1xRS-232/422/485 1 x RS-232 2x RS-232(Internal)
LAN PORTS	2x Ethernet on rear IO Gigabit-LAN (10/100/1000MBit)
USB PORTS	4x USB 3.0 (Rear) + 2x USB 2.0 (Front Header) + 1x USB 2.0 (mPCle)
AUDIO	HD Analog audio interface (Line-In, Line-Out, Mic-In, SPDIF)
PCIe SLOTS	1x PCIe x16 (Gen 3)
TPM	TPM2.0
POWER SUPPLY	ATX PWR 20pin + 4pin (Internal Input Power)
MTBF	TBD
Compliance	CE, ROHS, WEEE
SAFETY	IEC 60950-1: 2005.
COOLING SOLUTIONS	Active cooling solutions
OPERATING TEMPERATURE	0 °C to 60 °C
REGULATORY	Comply with Emission: EN55022
DIMENSIONS	Thin Mini-ITX, 170 x 170 mm
OPERATING SYSTEMS	Win7, Win8.1, Win10, Linux
BIOS	AMI Aptio V UEFI
Chipset	H110

ORDERING INFORMATION

Articles	Part No.	Description
mITX-SKL-S-H110 board	1060-6381	mITX-SKL-S with H110 chipset

RECOMMENDED PROCESSORS

Articles	Part No.	Description
Core i7-6700	1060-3692	CPU, Core I7-6700 4G 4C 8M Cache FC-LGA14C Intel code CM8066201920103, SR2BT Embedded
Core i5-6500	1060-3687	CPU, Core I5-6500 3.6G 4C 6M Cache FC-LGA14C Intel code CM8066201920404, SR2BX Embedded
Core i3-6100	1060-3685	CPU, Core I3-6100 2.7G 2C 4M Cache FC-LGA14C Intel code CM8066201927202, SR2HG Embedded

RECOMMENDED MEMORY MODULES

Articles	Part No.	Description
STANDARD GRADE 0 °C TO +60 °C	1060-2753	DDR4-2133 SODIMM 4GB
STANDARD GRADE 0 °C TO +60 °C	1060-2760	DDR4-2133 SODIMM 8GB
STANDARD GRADE 0 °C TO +60 °C	1060-2761	DDR4-2133 SODIMM 16GB
STANDARD GRADE 0 °C TO +60 °C	1060-2762	DDR4-2133 ECC SODIMM 4GB
STANDARD GRADE 0 °C TO +60 °C	1060-2763	DDR4-2133 ECC SODIMM 8GB
STANDARD GRADE 0 °C TO +60 °C	1060-2764	DDR4-2133 ECC SODIMM 16GB

RECOMMENDED COOLER

Articles	Part No.	Description
Active Cooler	1046-6305	Cooler, Active, Intel, H2 LGA1155, 62mm

▶ CORPORATE OFFICES

EUROPE, MIDDLE EAST & AFRICA

Lise-Meitner-Str. 3-5
86156 Augsburg
Germany
Tel.: + 49 821 4086 0
Fax: + 49 821 4086 111
info@kontron.com

NORTH AMERICA

14118 Stowe Drive
Poway, CA 92064-7147
USA
Tel.: + 1 888 294 4558
Fax: + 1 858 677 0898
info@us.kontron.com

ASIA PACIFIC

1~2F, 10 Building, No. 8 Liangshuihe 2nd Street,
Economical & Technological Development Zone,
Beijing, 100176, P.R.China
Tel.: +86 10 63751188
Fax: +86 10 83682438
info@kontron.cn

FORTEC

ELEKTRONIK AG

Our company network supports you worldwide with offices in Germany, Austria, Switzerland, Great Britain and the USA. For more information please contact:

FORTEC Elektronik AG

Hauptniederlassung
Lechwiesenstr. 9
86899 Landsberg am Lech

Telefon: +49 (0) 8191 91172-0
Telefax: +49 (0) 8191 21770
E-Mail: sales@fortecag.de
Internet: www.fortecag.de

FORTEC Elektronik AG

Büro West
Hohenstaufenring 55
50674 Köln

Telefon: +49 (0) 221 272 273-0
Telefax: +49 (0) 221 272 273-10
E-Mail: west@fortecag.de
Internet: www.fortecag.de

FORTEC Elektronik AG

Büro Wien
Nuschinggasse 12
A-1230 Wien

Telefon: +43 1 8673492-0
Telefax: +43 1 8673492-26
E-Mail: office@fortec.at
Internet: www.fortec.at

ALTRAC AG

(Tochter der Fortec AG):
Bahnhofstraße 3
CH-5436 Würenlos

Telefon: +41 (0) 44 7446111
Telefax: +41 (0) 44 7446161
E-Mail: info@altrac.ch
Internet: www.altrac.ch

Members of the FORTEC Group:

