

Datasheet

CFB 600-300S

Cincon

Our company network supports you worldwide with offices in Germany, Austria, Switzerland, Great Britain and the USA. For more information please contact:

FORTEC Elektronik AG

Hauptniederlassung
Lechwiesenstr. 9
86899 Landsberg am Lech

Telefon: +49 (0) 8191 91172-0
Telefax: +49 (0) 8191 21770
E-Mail: sales@fortecag.de
Internet: www.fortecag.de

FORTEC Elektronik AG

Büro Nord
Am Hasenkamp 36
22457 Hamburg

Telefon: +49 (0) 40 54 80 56 11
Telefax: +49 (0) 40 54 80 56 13
E-Mail: nord@fortecag.de
Internet: www.fortecag.de

FORTEC Elektronik AG

Büro West
Hohenstaufenring 55
50674 Köln

Telefon: +49 (0) 221 272 273-0
Telefax: +49 (0) 221 272 273-10
E-Mail: west@fortecag.de
Internet: www.fortecag.de

FORTEC Elektronik AG

Büro Wien
Nuschinggasse 12
A-1230 Wien

Telefon: +43 1 8673492-0
Telefax: +43 1 8673492-26
E-Mail: office@fortec.at
Internet: www.fortec.at

ALTRAC AG

(Tochter der FORTEC):
Bahnhofstraße 3
CH-5436 Würenlos

Telefon: +41 (0) 44 7446111
Telefax: +41 (0) 44 7446161
E-Mail: info@altrac.ch
Internet: www.altrac.ch

The information contained in this document has been carefully researched and is, to the best of our knowledge, accurate. However, we assume no liability for any product failures or damages, immediate or consequential, resulting from the use of the information provided herein. Our products are not intended for use in systems in which failures of product could result in personal injury. All trademarks mentioned herein are property of their respective owners. All specifications are subject to change without notice.



CFB600-300S SERIES 600 WATT 2:1 INPUT DC-DC CONVERTERS



FEATURES

- * 600W Isolated Output
- * Efficiency to 91%
- * Fixed Switching Frequency
- * Input Under-Voltage Protection
- * Over Temperature Protection
- * Over Voltage/Current Protection
- * Remote On/Off
- * Industry Full-Brick Package
- * UL 60950-1 Approval
- * Fully Isolated 3000VAC
- * Off-Line Systems Using PFC Front-Ends



MODEL NUMBER	INPUT VOLTAGE	OUTPUT VOLTAGE	OUTPUT CURRENT		INPUT CURRENT		% Eff.	CAPACITIVE LOAD MAX.
			MIN.	MAX.	NO LOAD	FULL LOAD		
CFB600-300S12	180-425 VDC	12 VDC	0 mA	50 A	10 mA	2.24 A	89.5	10000uF
CFB600-300S24	180-425 VDC	24 VDC	0 mA	25 A	10 mA	2.21 A	90.5	10000uF
CFB600-300S48	180-425 VDC	48 VDC	0 mA	12.5 A	10 mA	2.20 A	91	8000uF

NOTE:

1. Nominal Input Voltage 300 VDC.
2. The output terminal required a minimum capacitor 470uF to maintain specified regulation.
3. Measure at Nominal Input Voltage.

SPECIFICATIONS

All Specifications Typical At Nominal Line, Full Load, and 25°C Unless Otherwise Noted

INPUT SPECIFICATIONS:

Input Voltage Range	300V	180-425V
Input Over Voltage Protection	Module on	480V
	Module off	500V
Under Voltage Lockout	300Vin Power Up	170V
	300Vin Power Down	160V
Positive Logic Remote On/Off (note5&6)		
Input Filter		Capacitive

OUTPUT SPECIFICATIONS:

Voltage Accuracy	±1.5% max.
Transient Response:25% Step Load Change	<500µs
External Trim Adj. Range (note4)	60-110%
Load share Accuracy	±10% at 50% to 100% Full Load
Auxiliary output voltage/current	10±3Vdc/20mA max.
Ripple & Noise, 20MHz BW (note3)	
12V	75mV RMS max., 150mV pk-pk max.
24V	120mV RMS max., 240mV pk-pk max.
48V	200mV RMS max., 480mV pk-pk max.
Temperature Coefficient	±0.03%/°C
Short Circui, Protection	Continuous
Line Regulation (note1)	±0.2% max.
Load Regulation (note2)	±0.5% max.
Over Voltage Protection Trip Range, % Vo nom	115-140%
Current Limit	105% -125% Nominal Output
Start up time	40ms typ.

GENERAL SPECIFICATIONS:

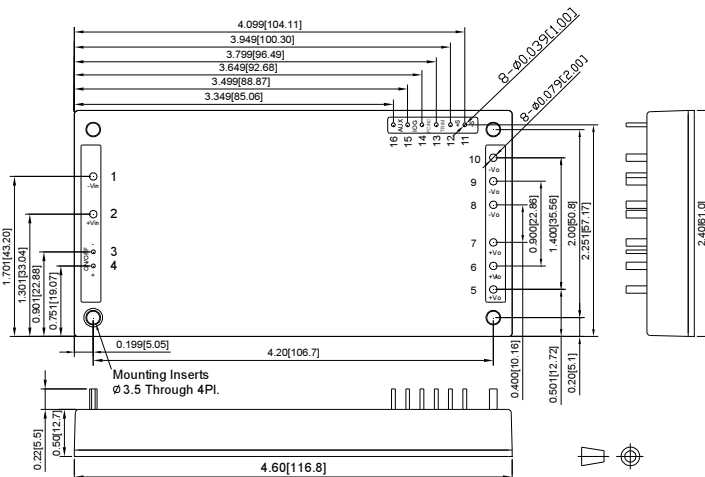
Efficiency	See Table
Isolation Voltage	Input/Output 3000VAC min.
	Input/Case 2500VAC min.
	Output/Case 500VAC min.
Isolation Resistance	10 ⁷ ohm min.
Switching Frequency	200KHz typ.
Operating Case Temperature	-40°C to 100°C
Storage Temperature	-55°C to +105°C
Thermal Shutdown, Case Temp.	105°C typ.
Humidity	95% RH max. Non condensing
MTBF	MIL-STD-217F, GB, 25°C, Full Load 420Khrs typ.
Dimensions	4.60x2.40 x0.50 inches (116.8x61.0x12.7 mm)
Case Material	Aluminum Baseplate with Plastic Case
Weight	230g typ.

NOTE :

1. Measured from high line to low line.
2. Measured from full load to zero load.
3. Output ripple and noise measured with min. capacitor 470uF and 1uF ceramic capacitor across output.
4. The output adjustment circuit and trim equations show as figure1 and figure2.
5. Logic compatibility open collector refer to -Vin
 - Module on >3.5Vdc to 75Vdc or Open Circuit
 - Module off 0 to <1.2Vdc
6. Suffix "N" to the model number with negative logic remote on/off
 - Module on 0 to <1.2Vdc
 - Module off >3.5Vdc to 75Vdc or open circuit
7. An external input capacitor 330uF for all models are recommended to reduce input ripple voltage.

CASE FB

Tolerances Inches: .XX±0.02 .XXX±0.010 ±0.004
Millimeters: .X±0.5 .XX±0.25 ±0.1



PIN CONNECTIONS	
PIN NUMBER	FUNCTION
1	-V Input
2	+V Input
3	-On/Off
4	+On/Off
5 - 7	+V Output
8 - 10	-V Output
11	-S
12	+S
13	TRIM
14	PC/NC
15	IOG
16	AUX

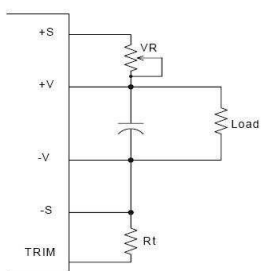


Figure1 The schematic of output voltage adjusted by using external resistor and/or variable resistor.

The output voltage can be determined by below equations:

$$Vf = \frac{1.24 \times \left(\frac{Rt \times 33}{Rt + 33} \right)}{7.68 + \frac{Rt \times 33}{Rt + 33}}$$

$$Vout = (Vo + VR) \times Vf$$

Unit: KΩ

Vo: Nominal Output Voltage

Rt =6.8KΩ

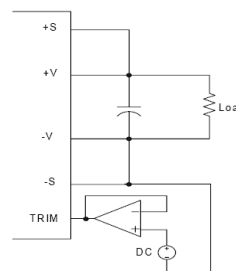


Figure 2 The schematic of output voltage adjusted by using external DC voltage.

Output Voltage = TRIM Terminal Voltage * Nominal Output Voltage

FORTEC

ELEKTRONIK AG

Our company network supports you worldwide with offices in Germany, Austria, Switzerland, Great Britain and the USA. For more information please contact:

FORTEC Elektronik AG

Hauptniederlassung
Lechwiesenstr. 9
86899 Landsberg am Lech

Telefon: +49 (0) 8191 91172-0
Telefax: +49 (0) 8191 21770
E-Mail: sales@fortecag.de
Internet: www.fortecag.de

FORTEC Elektronik AG

Büro Nord
Am Hasenkamp 36
22457 Hamburg

Telefon: +49 (0) 40 54 80 56 11
Telefax: +49 (0) 40 54 80 56 13
E-Mail: nord@fortecag.de
Internet: www.fortecag.de

FORTEC Elektronik AG

Büro West
Hohenstaufenring 55
50674 Köln

Telefon: +49 (0) 221 272 273-0
Telefax: +49 (0) 221 272 273-10
E-Mail: west@fortecag.de
Internet: www.fortecag.de

FORTEC Elektronik AG

Büro Wien
Nuschinggasse 12
A-1230 Wien

Telefon: +43 1 8673492-0
Telefax: +43 1 8673492-26
E-Mail: office@fortec.at
Internet: www.fortec.at

ALTRAC AG

(Tochter der Fortec AG):
Bahnhofstraße 3
CH-5436 Würenlos

Telefon: +41 (0) 44 7446111
Telefax: +41 (0) 44 7446161
E-Mail: info@altrac.ch
Internet: www.altrac.ch

Members of the FORTEC Group:

